

# Welcome to Asia Rael Academy! 79 aH (2024)

(August 26, 2024)

## ■ The Academy Organizer

Japanese Raelian Movement (JRM)

Contact: International Welcome Team (IWT)

e-mail: asia-ha@rael.org

## ■ Dates

December 14 (Sat) to December 18 (Wed), 79 aH (2024)

## ■ The Key Schedule & Reception Availability

December 14 (Sat)	2:30 pm - 6:30 pm	Reception open for the final procedure*
December 15 (Sun)	8:45 am	Opening of the Academy hall
	9:30 am	Start of the Academy
December 15 (Sun) - 17 (Tue)		Reception open after the Academy start
	9:00 am - 9:20 am	
	2:30 pm - 2:50 pm	
December 18 (Wed)	12:30 pm	End of the Academy

\*Note: At the reception desk on Dec 14, you will pay for your reservations and order made in advance on “rael.org” registration site and then, receive a participation ID card. Please complete your online-registration before October 25, 2024. The “rael.org” online registration site is planned to open in August, 2024.

## ■ Location

**BANKOKU SHINRYOKAN “the Summit Hall”**

<https://www.shinryokan.com/detail.jsp?id=22274&menuid=6597&funcid=1>

### **In the Summit Hall:**

- ◇ All the events of the Academy will be held.
- ◇ You will pay for a participation fee.
- ◇ Your participation ID cards are handed out.
- ◇ You will be handed your reserved meal boxes.

### **Twin-Line Hotel Yanbaru Okinawa Japan (NEW)**

URL site in English: <https://twin-line-hotel-yanbaru.jp/en/>

### **Twin-Line Hotel:**

- ◇ It is a 6-minute drive to the Summit Hall.
- ◇ It offers group discounts on a dedicated JRM booking website.  
<https://reserve.489ban.net/client/suncoast-okinawa/4/detail/868959>  
(Note: please make your own room reservations from the above site).

For discount conditions, room types and rates, please refer to “Twin-Line Hotel Yanbaru Okinawa - Group Discount Terms and Conditions” in “APPENDIX A” attached at the end of this guideline.

- ◇ After your hotel reservation, you will receive a room key at the front desk upon your arrival at the hotel.
- ◇ JRM Circular Buses will operate to and from the Summit Hall before and after each session.
- ◇ JRM Chartered Buses to Naha Airport, Naha City, and Nanjo City will operate only on December 18.

Note: For reservations with better cancellation terms, we recommend that you make your reservations through other reservation sites.

**■ Hotels (NEW)**

Group discount reservations through JRM for KARIYUSHI Beach Resort Ocean Spa Hotel are not available any more. If you wish to use the bus to the Summit Hall, please make your own reservation at one of the three hotels we recommend.

For your reference, please refer to “Hotels near the Summit Hall” in ” APPENDIX B”, attached at the end of this guideline. It lists the distances from the hotels to the Summit Hall and the hotels that are served by JRM Circular Bus, JRM Charter Bus, and commercial bus.

“Hotels and transportations” in “APPENDIX C” shows locations of the hotels, the Summit Hall and bus stops on a map.

- JRM Circular Buses stop at Twin-Line Hotel & KANEHIDE KISE Beach Palace Hotel to/from the Summit Hall. The Best Western Hotel guests can walk to Twin-Line Hotel in 2 minutes and use the JRM Buses there.
- Please note that Twin-Line Hotel charges a 100 % cancellation fee 30 days prior to the check-in date for group discounts, which is much earlier than other sites. You can also reserve Twin-Line Hotel on other booking sites, but we recommend booking early for better prices and availability.
- If you wish to use JRM Circulation Bus at KANEHIDE KISE Beach Palace Hotel or Best Western Hotel, please make reservations through online reservation sites. The earlier you book, the better the rates and availability.
- If you are applying for a visa, please reserve your Twin-Line Hotel via other booking sites. This is because a 100% cancellation fee may be automatically charged to your credit card for group discount reservations, even if you do not have a visa.
- JRM does not provide any support for your hotel reservations except for issues related to the Twin-Line Hotel group discount. Even if JRM provides support, JRM will not take any responsibility as this is essentially a direct transaction between you and the hotel. So if you have any concerns, please contact us as early as possible.

**■ Basic Daily Schedule**

9:30 am - 9:55 am	Meditation
10:00 am - 12:30 pm	Morning session
12:30 pm - 3:00 pm	Lunch break
3:00 pm - 5:30 pm	Afternoon session
5:30 pm - 7:30 pm	Dinner break
7:30 pm - 9:30 pm	Entertainment or Showtime

**Note:** The above schedule may change.

**<What to apply>**

- On the online JRM registration site at “rae.org”, you can reserve the following:
  - (1) Academy participation
  - (2) Meals (boxed meals called “BENTO”)
  - (3) JRM Circular Bus service between the Summit Hall and Twin-Line Hotel (Best Western Hotel) or KANEHIDE KISE Beach Palace Hotel
  - (4) JRM Charter Bus from Twin-Line Hotel, (Best Western Hotel) to Naha Airport, Naha City and Nanjo City (available only on December 18)
- You must apply for participation of the Academy apart from booking hotels on group discount site or other booking sites. Please note without registration and payment, you will not be able to attend any Raelian events.
- Twin-Line Hotel reservations at a group discount include buffet breakfast. Restaurants near the Summit Hall are located at the Busena Terrace. If you would like a reasonably priced meal, please order BENTO.
- Your registration after October 25, may be accepted without meal order and no JRM bus reservation if no seats available, as long as you will keep a place to stay during the Academy and manage all the necessary transportations.
- After October 25, your registration may be accepted offline if you can secure your own hotel room and transportation to the Academy venue. But please note we will close our meal order service and our bus seats may run out.

**■ Participation Fee (NEW)**

- Participation fee includes use of facilities & equipment and teaching materials.

Participation fee	Full Participation fee (discounted price by Oct 25)	Full Participation fee (regular price)	Participation fee /day by Oct 25 (regular price)
Member (Structure / Simple)	JPY 15,200	JPY 17,200	JPY 3,800 (JPY 4,300)
Non member	JPY 8,000	JPY 8,000	JPY 2,000 (JPY 2,000)
All persons under 19	Free	Free	Free

NOTE:

Currency- Japanese Yen (JPY)

- Deadline for your registration for Academy participation is October 25, 2024. Members are entitled to a participation fee discount until October 25.
- The participation fee is waived for those who are 18 years old or younger, regardless of membership or non-membership. Please present your ID at the reception desk.
- If you have registered at “rae.org” and wish to change your registration, please contact JRM as indicated at the beginning of this guideline, as changes cannot be made online.

**■ Meals (BENTO) (Please apply online!)**

BENTO (meal served in a box)

Lunch JPY700

Dinner JPY1,200

- Pre-ordered BENTO will be handed at the Summit Hall after morning and afternoon sessions.
- Please note if you do not pick up your BENTO within the designated time, it will be disposed to prevent food poisoning.
- Please do not order BENTO if there is a possibility that you will cancel your participation after registering online. If you cancel after the deadline, you may be charged 100% of the ordered BENTO.

### <Deadlines>

- For Participation, BENTO and JRM Bus service:  
Please register by:

Friday, October 25, 79 aH (2024), Japan time

### <Cancellation Fee>

#### Twin-Line Hotel

**For reservations made through the JRM Group discount site, a 100% cancellation fee will be charged to your credit card 30 days prior to the check-in date.**

**Example: November 13, 2024 for a check-in date of December 13, 2024**

### <Payment>

- After registering online, you will receive the automated message confirming our acceptance. If you do not receive this auto-response e-mail, please contact International Welcome Team listed at the beginning of this guideline.
- International Welcome Team will send you an email with your reservation details and invoice.
- Payment must be made in Japanese yen cash only at a reception desk on Dec 14.
- Since there are no reasonably-priced foreign exchange services in the Academy area, it is recommended to exchange services or ATM cash withdrawal service at major international airports upon arrival in Japan.
- Please pay Twin-Line Hotel rate booked with the group discount by credit card.

### ■ Transportation

- JRM Circular Bus  
JRM Circular Bus runs between the Summit Hall and Twin-Line Hotel (Best Western Hotel) & KISE Beach Palace Hotel before and after each session during the whole Academy.

To use the JRM Circulation Bus, please make a reservation on the registration form at "rael.org" and let us know which hotel you will be using the bus at. If you are coming by car or staying at another hotel, please select "No" on the registration form.

Time required	10~15 minutes before and after each session
Bus fare	JPY3,000

NOTE: If you have booked Twin-Line Hotel, Best Western Hotel or KANEHIDE KISE Beach Palace Hotel through other reservation sites, you can also use our circular bus service. Please select the hotel you booked. If you fail to book by October 25, the bus fare will be JPY4,000.

- Airport Limousine Bus  
From Naha Airport to KANEHIDE KISE Beach Palace Hotel  
Take a bus bound for CD Area and DE Area and get off in front of the designated Hotel  
Travel time           120~130 minutes  
Bus fare               JPY2,240

Limousine Bus Information:

<https://okinawabus.com/en/wp-content/uploads/sites/7/2024/06/95a2badcbbf44a0c15ae6af72ad2d81d.pdf>

Note: Timetables are subject to change, so please check for the latest information.

Airport Limousine Buses arrive and depart in front of KANEHIDE KISE Beach Palace Hotel. If you are going to Twin-Line Hotel (or Best Western Hotel) from Naha Airport by Limousine Bus, get off at the KISE Beach Palace Hotel bus stop and walk for 8 minutes.

- Airport Shuttle Bus  
From Naha Airport to KARIYUSHI Beach bus stop  
Travel time               100 minutes  
Bus fare                   JPY1,600  
Airport Shuttle Bus Information: <https://www.okinawa-shuttle.co.jp/en/timetable/>  
Time Table: No effective date listed  
<https://www.okinawa-shuttle.co.jp/wp-content/themes/shuttle/images/okinawa-airportshuttle-bus-schedule2019-2020-winter.pdf>  
Note: Timetables are subject to change, so please check for the latest information.

Airport Shuttle Bus operates in front of KARIYUSHI LCH Resort on the Beach (name of the bus stop: "Kariyushi Beach"). If you are going to Odysis Hotel from Naha Airport by Airport Shuttle Bus, please get off at "KARIYUSHI Beach" bus stop and walk for 2 minutes. To go to KANEHIDE KISE Beach Palace Hotel, Twin-Line Hotel or Best Western Hotel, please take a taxi for 3 ~5 minutes (26 ~35 minute walk) from "KARIYUSHI Beach" bus stop.

A transportation manual will be distributed to all participants in November.

- JRM Chartered Buses (Please apply online!)  
As there are no bus services in the afternoon in the Academy Area, JRM Charter Bus will operate from Twin-Line Hotel to Naha Airport, Naha City and Nanjo City only on Dec 18 after the Academy.

If you fly back on Dec 18 after the Academy, please inform us of your flight details. We will put you in the list of buses with appropriate departure time to Naha Airport. If there is no flight information, we cannot guarantee your seat. For other destinations, please select Naha or Nanjo on the registration form.

Travel time               80 minutes (100 minutes for Nanjo)  
Bus fare                   JPY2,000 (plus JPY1,000 for Nanjo)

JRM Bus is recommended the most as it goes directly to Naha Airport and fastest, but please be punctual as it only departs from Twin-Line Hotel.

- Taxi  
Between Naha Airport and Twin-Line Hotel  
Time required           90 to 100 minutes  
Cost                       About JPY18,000 or more plus highway tolls

- Car rental  
If you use a condominium or lodge far from the Summit Hall, you can rent a car. Car rentals can be found on the Internet. An international driving license is required to drive in Japan.

- Electric scooter rental (NEW)  
Electric scooters and electric bicycles can also be rented from the following shops.  
If you are staying at KANEHIDE KISE Palace Hotel, KARIYUSHI Beach Resort Ocean Spa Hotel, or Best Western Hotel, the shops will deliver them to your hotel free of charge on your check-in day. If you are staying at any other hotel, a delivery fee of JPY 1,100/trip will be charged.

Rental fee / day: 3,980 yen ( prices vary depending on the season)  
Please reserve earlier as the number is limited.  
<https://www.kkday.com/en-us/product/152837>

## ■ Conditions

### <Qualified participants>

- Those who are 15 years of age or older
- Members of Raelian Movements and non-members
- For security reasons, you will be asked to show your ID at a reception desk.
- If necessary, a photograph will be taken to create a participant's ID (Please accept)
- Those between the ages of 15 and 17 are required to have a written consent from their parents.

### < Miscellaneous >

- Translation services are provided in English, Korean, Chinese, and other languages if needed and translators are available.
- Please bring your own portable radio with a frequency of 88.0 to 108.0 MHz.
- Photographing & videotaping, and recordings are prohibited during the program.
- In order to maintain the functionality of technical and audio devices, please turn off wifi or Bluetooth on your smart phone or computer.
- Please note that when Maitreya Rael is not teaching, others may take over for him.

## ■ Typical Itinerary

- Dec 13 Fri     Arrive at Naha Airport and transfer by bus and taxi to Twin-Line Hotel.  
Check in Twin-Line Hotel and receive room key.
- Dec 14 Sat     Transfer to the Summit Hall by JRM Circular Bus, pay and receive your  
participant ID.
- Dec 15 Sun     The Academy starts.
- Dec 18 Wed     Check out of Twin-Line Hotel, return keys and leave luggage in the lobby.  
Transfer to the Summit Hall by JRM Circular Bus and attend final session  
in the morning.  
The Academy finishes.  
Receive pre-ordered BENTO at the Summit Hall.  
Return to Twin-Line Hotel by JRM Circular Bus to collect luggage.  
Transfer from Twin-Line Hotel to Naha City by JRM Charter Bus.  
Check in at a hotel in Naha City.
- Dec 19 Thu     Check out of hotel and fly back.

If you have any questions, please feel free to contact JRM international Welcome e-mail address given at the top of this guideline.

## ■ SPECIAL NOTE FOR VISA APPLICANTS (NEW)

- If you need an entry visa, please apply for a tourist visa by yourself. There is no invitation from JRM.
- It takes about one month to receive the result from the Embassy. This is because the examination starts after the required documents are submitted to the Embassy. If the examination is severe, it may take more than one month to receive the result.
- The deadline for obtaining a visa is October 25, 2024.
- Therefore, we recommend that you apply and submit your first set of documents by the end of August or early September. In most cases, the Embassy will ask you to submit further documents.
- Please note that your online registration without visa after October 25 will be invalid.
- Please do not book your airline tickets before you receive the results, as obtaining a visa is not guaranteed.
- For more details, please check with your country's National Guide.

## **TWIN-LINE HOTEL YANBARU OKINAWA** **Group Discount Terms and conditions**

Welcome to Twin-Line Hotel group reservation prepared for JRM. Below are the essential terms and conditions for group discounts. Please read them carefully before making your reservation.

If you need an entry visa, please use other reservation sites because the hotel cannot confirm your reservation until you get a visa and their group discount has a strict cancellation policy.

Hotel URL

English: <https://twin-line-hotel-yanbaru.jp/en/>

Korean: <https://twin-line-hotel-yanbaru.jp/ko/>

Chinese: <https://twin-line-hotel-yanbaru.jp/cn/>

Taiwanese: <https://twin-line-hotel-yanbaru.jp/tw/>

### **Hotel Group-Discount Reservation site for JRM only**

**<https://reserve.489ban.net/client/suncoast-okinawa/4/detail/868959>**

Please read the notes on group discounts on this site before making reservations.

### **1. Rooms and Charges**

Room rate per person per night including breakfast

Room for 1 person	13,200 yen
Room for 2 persons	7,700 yen
Room for 3 persons	5,900 yen
Room for 4 persons	6,200 yen
Room for 5 persons	5,600 yen

#### **■ Superior Room**

Room size: 21.32 m<sup>2</sup>

Capacity: 1~3 persons

Up to: 2~3 beds

- for 2 persons - 2 single beds
- for 3 persons - 1 single bed is added

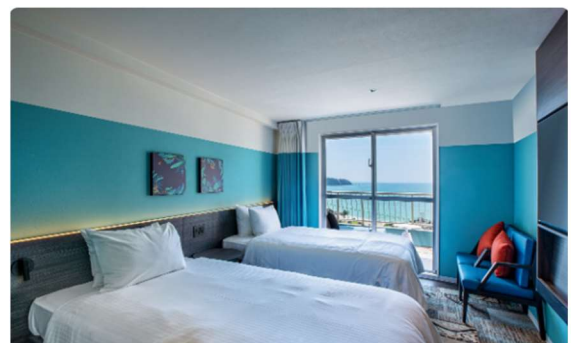
#### **■ Deluxe Room**

Room size: 44.03 m<sup>2</sup>

Capacity: 4~5 persons

Up to: 4~5 beds

- for 4 persons  
2 semi-double beds & 2 sofa beds
- for 5 persons  
1 single bed is added



## 2. Equipment and furnishings

TV, refrigerator, electric kettle, teacups, air conditioner, air purifier, safety box, chair, table, full-length mirror

### ■ Support supplies

Face towels, bath towels, hair shampoo & conditioner, body soap, hair dryer, Slippers

\*Room wear, hairbrush, cotton swab, toothbrush, razor, hair band, ladies kit, and bath salt are available on the 1st floor.

## 3. Who can stay at the hotel

The Twin-Line Hotel welcomes the following guests who participate in the JRM event.

- (1) Foreign participants with a confirmed stay between Thursday, December 12 and Wednesday, December 18. (Maximum 7 nights, The Academy starts on December 14 and ends on December 18).
- (2) If guests are multiple, all the guests will check-in and check-out on the same day.
- (3) Priority will be given to those who use the JRM circular bus between the hotel and Summit Hall during the Academy, and the JRM bus to the airport, Naha, and Nanjo City on December 18.
- (4) Those who use the rooms and facilities with good manners, and respect other guests and hotel staff.

## 4. Hotel rules

**Available dates:** December 12 through 18  
(check-out: December 19)  
**Check-in time:** 3:00pm ~ 12:00 midnight  
**Check-out time:** 11:00am  
**Breakfast Buffet:** 7:00am~9:30am (included in room rate)  
**Payment:** credit card only  
**Cancellation** 100% charged 30 days prior to check-in date  
(ex: If you check-in on December 13, 100% on November 13)

## 5. Reservation Site

If you are unable to change your reservation after making a reservation online, please cancel your reservation and make it again.

- What can be changed after reservation
  - Reducing the number of nights
  - Increasing or decreasing the number of rooms
  - Increasing or decreasing the number of guests within the capacity
- What cannot be changed after reservation
  - Changing the check-in date
  - Increasing the number of nights
  - Changing the payment method
  - Changing the room type

**APPENDX B**

**27-Aug-24**

**Hotels near the Summit Hall**

NO	Hotel names	to Seminar Hall		JRM Circular Bus	JRM Bus to Airport, Naha & Nanjo	Airport Limousine Bus	Airport Shuttle Bus	Hotel shuttle bus	Hotel official URL
		Walking time (minutes)	Driving time (minutes)						
1	KANEHIDE KISE Beach Palace Hotel	25	4	YES	6 min-walk to Hotel 3.	YES	NO	YES	<a href="https://www.kise-beachpalace.jp/en/">https://www.kise-beachpalace.jp/en/</a>
2	Best Western KOUKI Beach Hotel	30	5	2 min-walk to Hotel 3.	2 min-walk to Hotel 3.	6 min-walk to Hotel 1.	NO	NO	<a href="https://go-egh-okinawa-kouki.reservation.jp/en">https://go-egh-okinawa-kouki.reservation.jp/en</a>
3	TWIN-Line Hotel YANBARU OKINAWA	32	6	YES	YES	8 min-walk to Hotel 1.	NO	NO	<a href="https://twin-line-hotel-yanbaru.jp/en/">https://twin-line-hotel-yanbaru.jp/en/</a>
4	KARIYUSHI RESORT LCH ON THE BEACH	21	4	NO	NO	NO	YES	NO	<a href="https://kariyushi-ichresort.jp/en/">https://kariyushi-ichresort.jp/en/</a>
5	Odysis Onna Resort Hotel	23	4	NO	NO	NO	2 min-walk to Hotel 4.	NO	<a href="https://odysisonna.com/en/">https://odysisonna.com/en/</a>
6	KARIYUSHI Beach Resort Ocean Spa	32	6	NO	NO	YES	NO	YES	<a href="https://kariyushi-oceanspa.jp/en/">https://kariyushi-oceanspa.jp/en/</a>
7	Beach Resort Hotel Kalakaua	29	5	NO	NO	NO	9 min-walk to Hotel 4.	NO	<a href="https://www.kalakaua.okinawa/">https://www.kalakaua.okinawa/</a>
8	The Busena Terrace	5	1	NO	NO	YES	NO	YES	<a href="https://www.terrace.co.jp/en/busena/">https://www.terrace.co.jp/en/busena/</a>

**NOTE**

- JRM Circular Buses are available between the first three hotels and the Summit Hall.
- Best Western Hotel guests can use JRM Circular Bus and JRM Bus to Airport, Naha and Nanjo at the Twin-Line Hotel, as Twin-Line Hotel is a 2-minute walk away.

# APPENDIX C Hotels and Transportation

August 27, 2024

## Transportation Convenience

- **Airport - Hotel**  
Airport Limousine Bus stops at:  
The Busena Terrace  
KANEHIDE KISE BEACH Palace Hotel
- **Airport Shuttle Bus stops at:**  
KARIYUSHI LCH Resort on the Beach
- **Hotel - Summit Hall**  
JRM Circular Bus stops at:  
Twin-Line Hotel  
KANEHIDE KISE Beach Palace Hotel  
Best Western hotel  
(available at Twin-Line Hotel)
- **Hotel → Airport / Naha / Nanjo**  
JRM Charter Bus operates on  
December 18 only

Twin-Line Hotel  
Best Western  
(available at Twin-Line Hotel)

Okinawa Kariyushi  
LCH Resort  
**Odyssey ONNA Resort**  
Hotel  
オディッセイオンナリゾートホテル

## Hotels near the Summit Hall

**BANKOKU SHINRYOKAN**  
Summit Hall  
万国津梁館

**The Busena Terrace Hotel & Resort**  
フセナ海中公園

**Best Western Hotel OKINAWA**  
KOUKI Beach  
(2-minute walk to Twin-line Hotel)  
ベストウエスタン沖縄幸喜ビーチ

JRM Circular BUS route:  
Twin-Line → KANEHIDE KISE → Summit Hall  
Summit Hall → KANEHIDE KISE → Twin-Line

15 min  
5.2 km

**KANEHIDE KISE Beach Palace Hotel**

## Time required

- **Hotels - Summit Hall**  
From Twin-Line/Best Western Hotel to the hall  
about 6-minute drive/ 30~32-minute walk
- **From KANEHIDE KISE Beach Palace/Odyssey ONNA Resort Hotel to the hall**  
about 4-minute drive/ 20~25-minute walk

